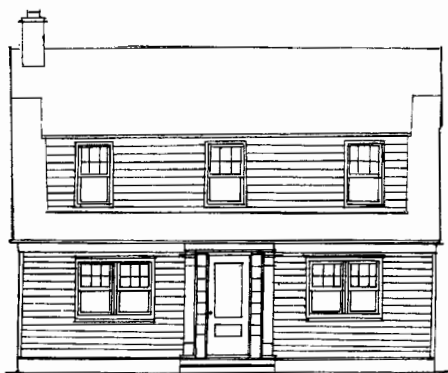




Foursquare



Dutch Colonial

New house construction was fairly strong between 1900 and the 1920s, but declined with World War I, the Depression of the 1930s, and World War II. The Foursquare, called simply the "Square Style" by builders, was especially popular before 1930.



Period Revival styles were popular in the 1920s. The influence of eighteenth-century Dutch Colonial farmhouses and even the English Tudor country house can be seen in Hastings.

*Right: In April 1921, the Graus Lumber Yard featured this Cape Cod house. The style remained popular after World War II (see page 16).*

## American Foursquare Style, 1900-1930

The Foursquare resembles boxy Classical Revival and Craftsman designs, but is usually simpler in appearance. Typical characteristics:

- Square plan.
- Hip roof; some variations have deep eaves and a horizontal emphasis.
- Narrow clapboard, shingle, or brick exterior and a concrete block foundation.
- One-over-one sash set in regularly-spaced windows.
- Porches with square columns.
- Original color schemes were typically earth-toned.

## Period Revival Styles, 1920-1950

The Dutch Colonial house was especially popular in Hastings. Typical features of the style are a gambrel roof, and a prominent brick or stone end-wall chimney.

**Small Homes Can Be Beautiful**

**F**OR the average home-builder wood is still the most economical building material. It gives you more house for the money and just as beautiful a house as you can build of any other material.

The beauty of a house lies in its design-- and a small house, carefully designed, can be as attractive as one that costs several times as much.

If you are thinking of building you can get valuable suggestions from our booklet "White Pine in Home-Building". In it you will find a number of attractive homes and floor plans, designed by architects of national reputation.

Come in and talk over your plans with us, or send for the booklet.

For the outside of the house we recommend White Pine because it holds its place better than any other wood. It does not warp, split, twist or rot even after years of exposure to the weather.

We have other woods for other uses and always recommend the best wood for your particular requirements.

**Graus Lumber Yard**  
Hastings, Minn.