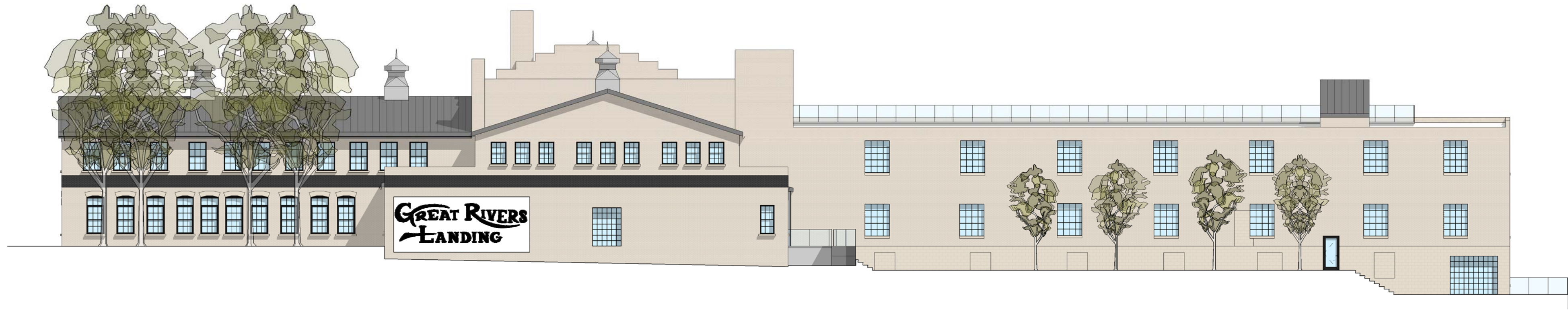
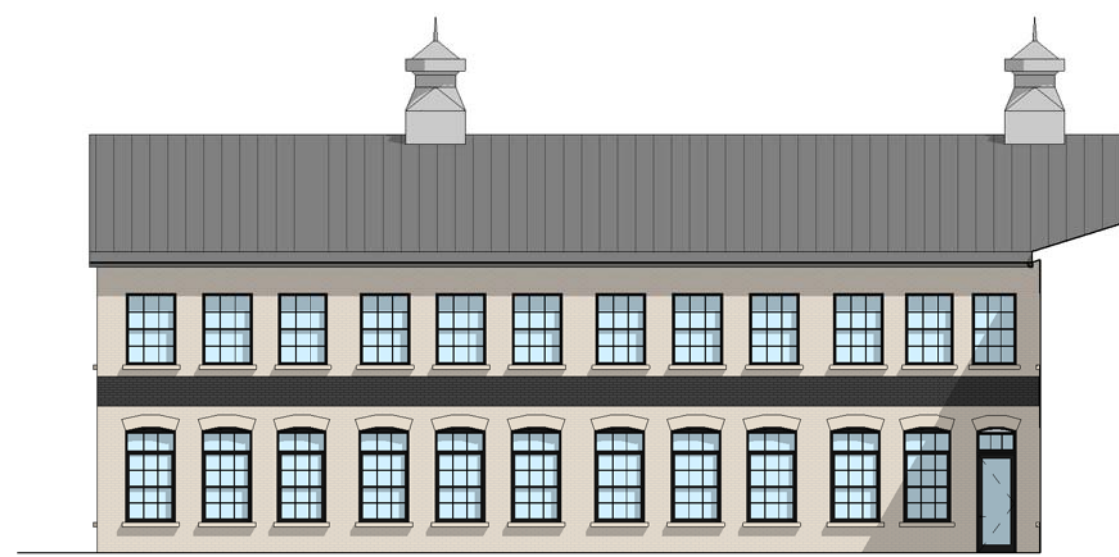




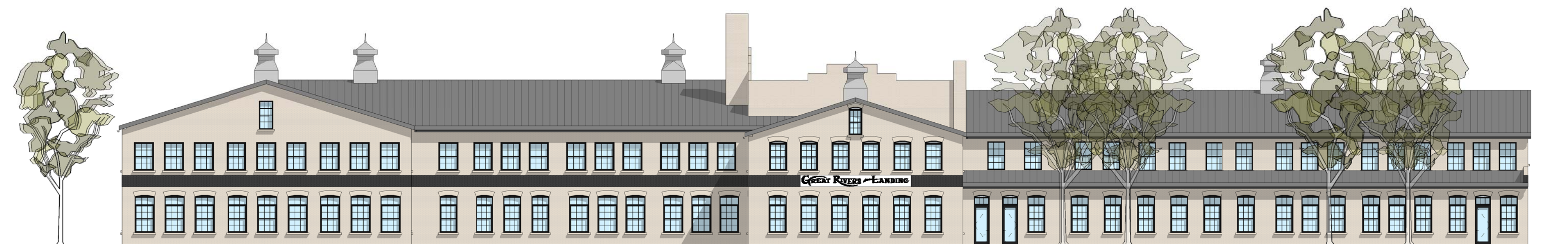
① OVERALL - NORTH ELEVATION
1/16" = 1'-0"



② OVERALL - EAST ELEVATION
1/16" = 1'-0"



⑤ BLDG B - EAST ELEVATION
1/16" = 1'-0"



③ OVERALL - SOUTH ELEVATION
1/16" = 1'-0"



⑥ BLDG A - WEST ELEVATION
1/16" = 1'-0"



④ OVERALL - WEST ELEVATION
1/16" = 1'-0"

I hereby certify this plan, specification or report was prepared by me or under my direct supervision and that I am a duly Licensed Architect under the laws of the state of MINNESOTA

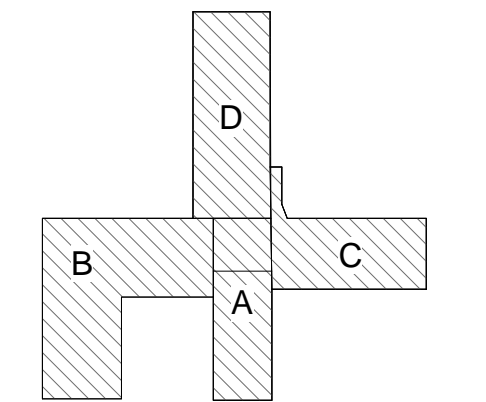
Pamela Bakken Anderson

Date: 05.11.15 Reg. No: 21241

NO.	DESCRIPTION	DATE

Revisions

BUILDING AREA KEY PLAN



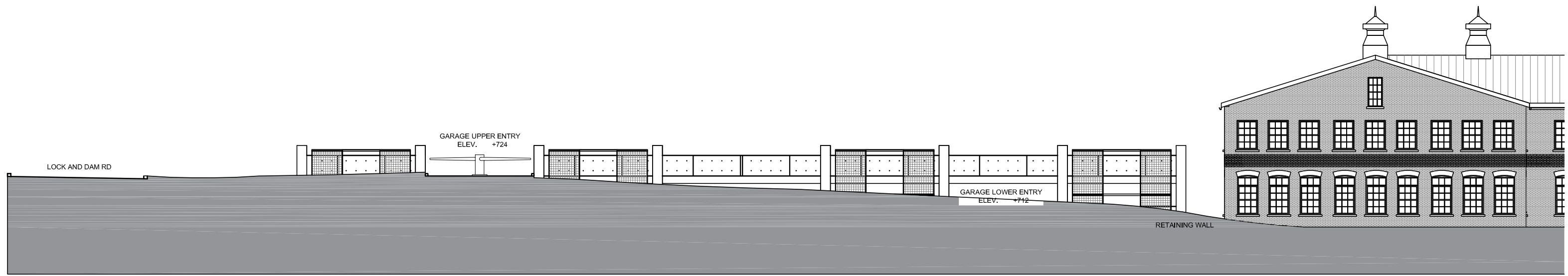
CITY PROPERTIES GROUP

GREAT RIVERS LANDING

EXTERIOR ELEVATIONS - COLORED

Date/ct number XXXXXX.XX
XXXX/XXXX
Drawn by Author
Checked by Checker

A411



GREAT RIVERS LANDING
HASTINGS, MINNESOTA
SOUTH ELEVATION . SEPTEMBER 2015

